

# MAKING GOOD CHOICES FOR THE PLANET

## Sequencing Activity



### Objectives:

- To rearrange the cards into the appropriate sequence.
- To facilitate discussion about helping our planet by planting trees, recycling, and saving water.

### Preparation:

1. Determine how many cards to print. This will depend on whether you want each haumāna to have their own set or just a few sets for a group center.
2. Print however many copies you need of the cards (page 2 of this document).
3. Cut out the picture cards, and laminate if desired.

### Discussion:

Ask the class if they've ever seen trash on the side of the road or at the beach, and whether they think that helps or hurts the 'āina and our planet. Lead a discussion about how there are lots of easy things we can do and choices we can make to help, specifically explaining planting trees, recycling, and conserving water.

### Activity:

Mix up the four cards in one set and tell haumāna that they need to arrange them into the correct sequence to show ways we can help the planet. (For more of a challenge, mix all 12 cards, and have them arrange the 4 sets.) Remind them that a sequence shows steps from the beginning to the end, and provide an example of a simple sequence to get them started.

Be sure to check out other resources at: <https://www.ksbe.edu/digital/holomoana/>

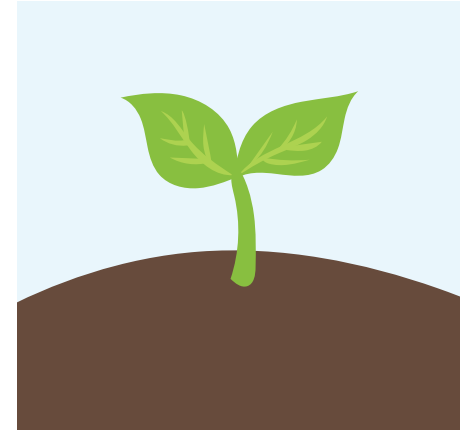
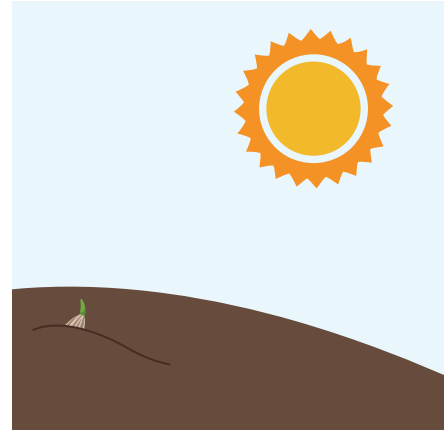
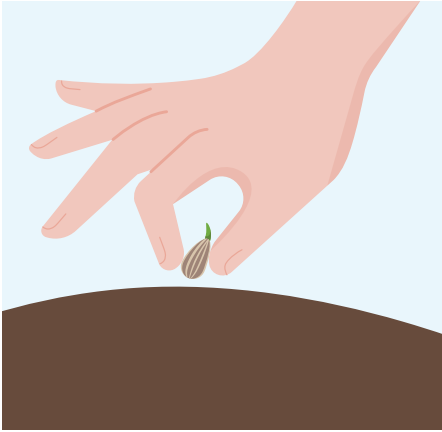
SHOW US WHAT YOU DID!



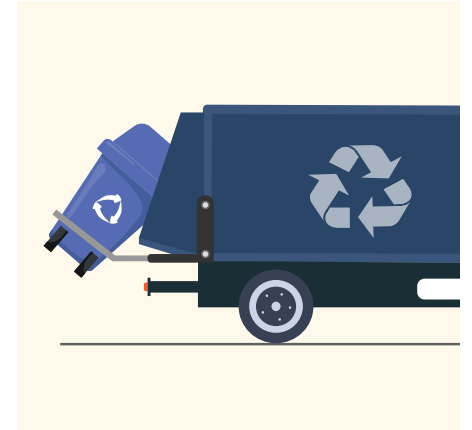
Send us a photo or video of your haumāna doing this activity for a chance to be featured on the Holomoana website! Email it to [ittraining@ksbe.edu](mailto:ittraining@ksbe.edu).

# "Making Good Choices for the Planet" Sequencing Cards

Set 1: E kanu i ka lā'au  
(Plant a tree)



Set 2: E ho'opō'aiapuni  
(Recycle)



Set 1: E mālama i ka wai  
(Save Water)

