

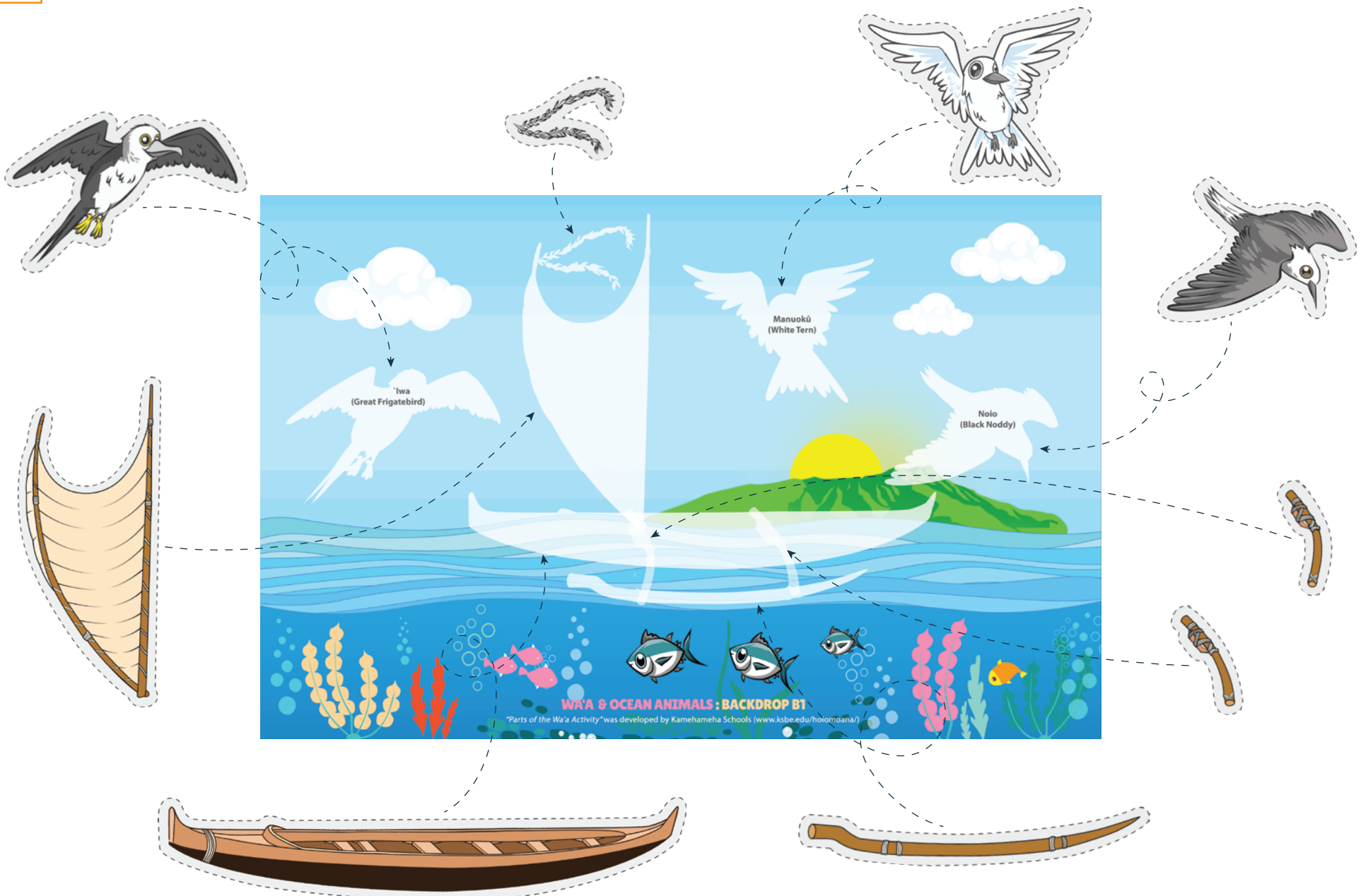
BUILDING A WA'A KAUKAHI

After discussing the different parts of the wa`a together as a class, let haumāna build a wa`a kaukahi on the beautiful ocean scenes.

Materials

- Laminator for 11" x 17" (tabloid) paper
- Scissors
- Velcro Dots or Velcro Strips

1. Print each page that you are interested in using with your keiki on 11" x 17" (tabloid) paper.
2. Carefully cut out the pieces from the cut-out sheets.
3. Laminate each backdrop and the cut-out pieces. Cut around the wa`a parts and ocean animals again leaving a small laminated edge.
4. Apply Velcro dots (or small Velcro strips) onto the backdrops where students will place each cut-out piece.
5. Stick the other side of the Velcro dots to the back of the cut-out pieces.
6. Have haumāna select a backdrop and attach the cut-out pieces in their appropriate places.



Be sure to check out other resources at: <https://www.ksbe.edu/digital/holomoana/>

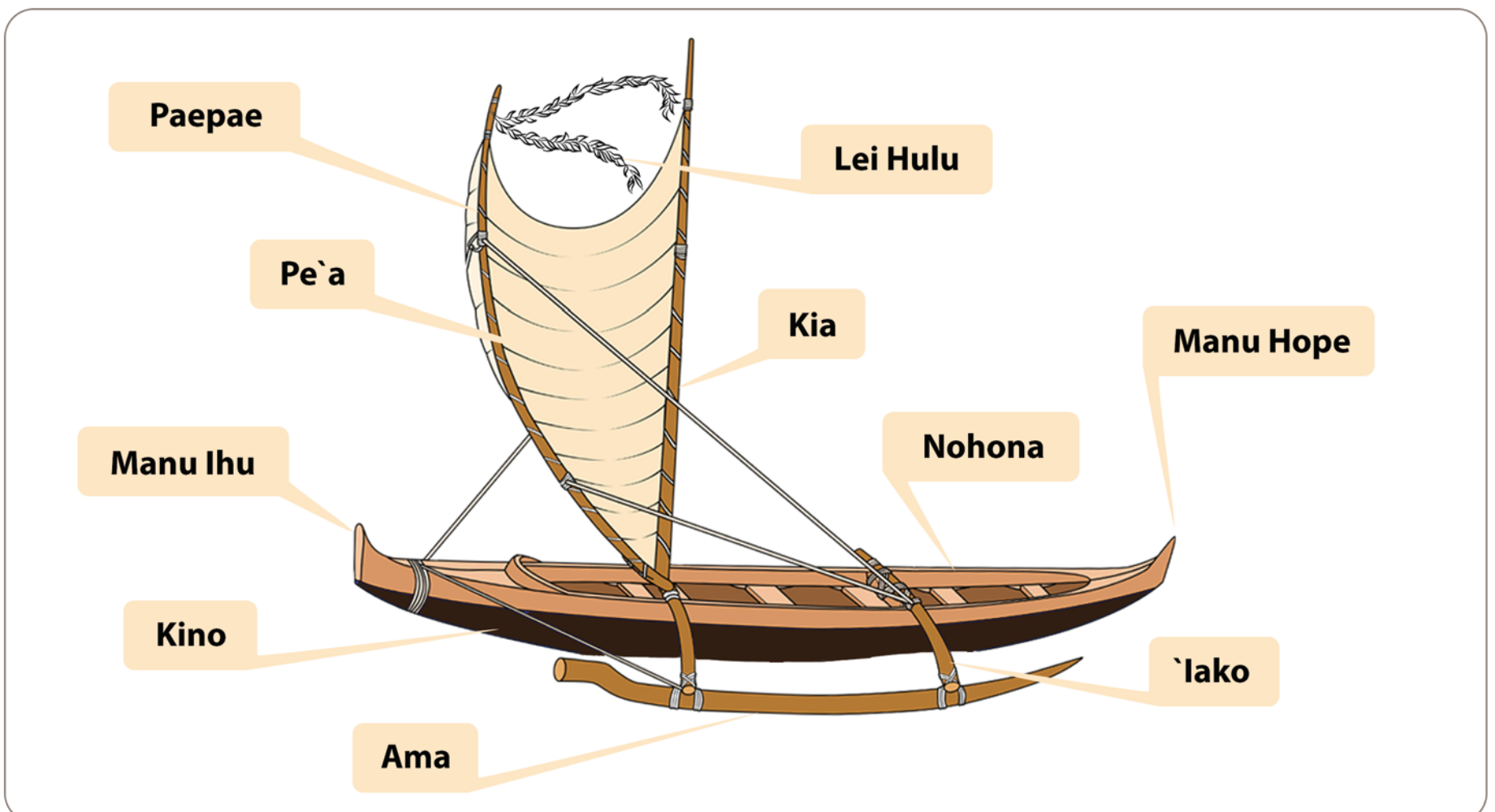
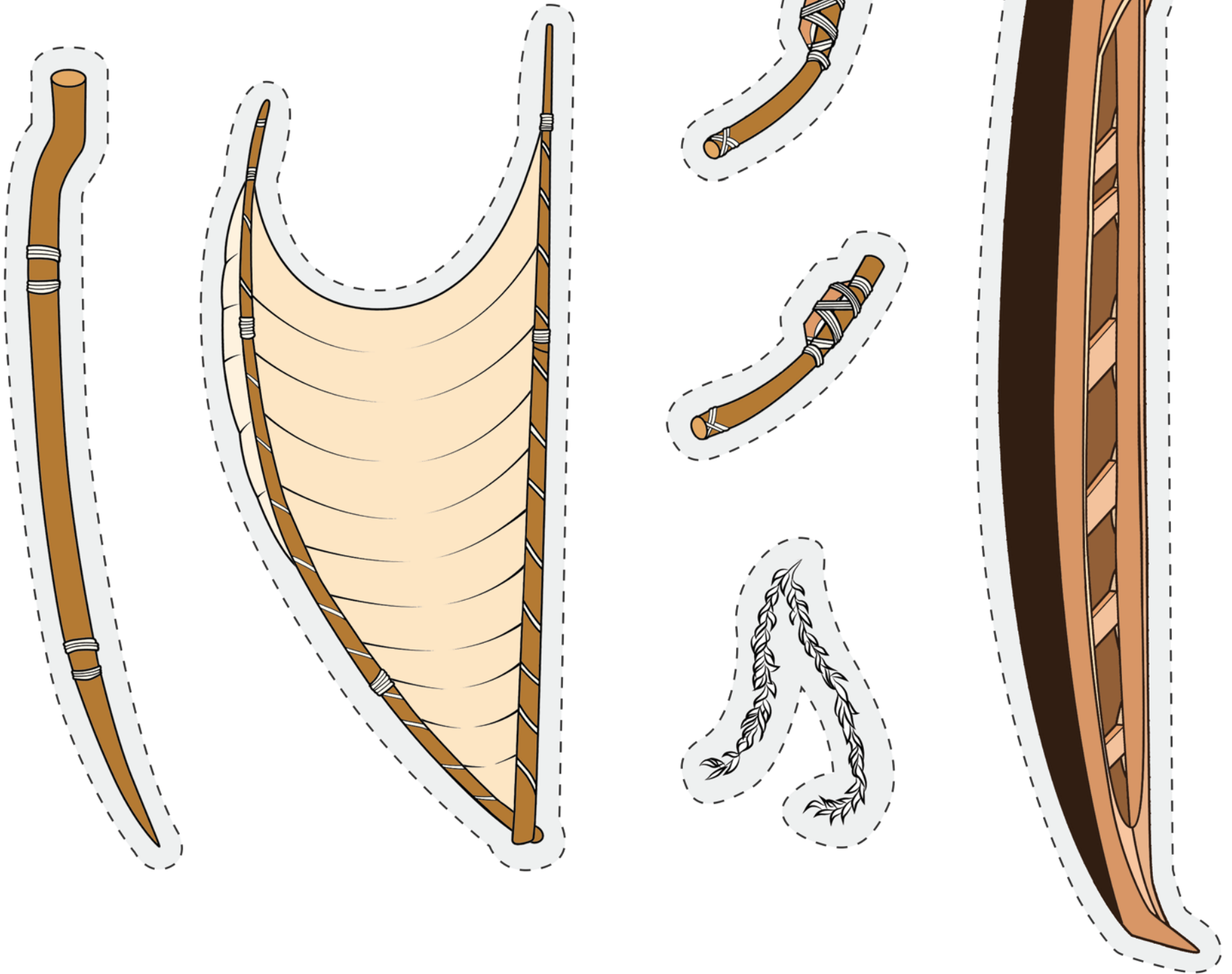
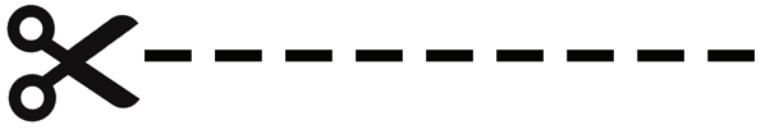
SHOW US WHAT YOU DID!



Send us a photo or video of your haumāna doing this activity for a chance to be featured on the Holomoana website! Email it to ittraining@ksbe.edu.

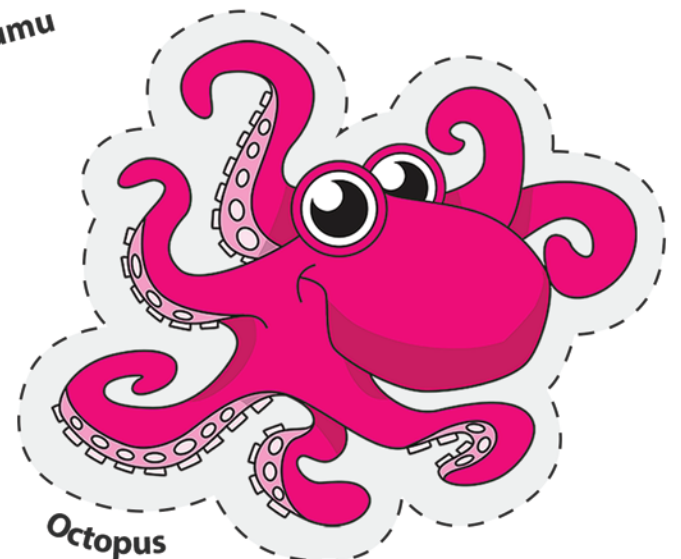
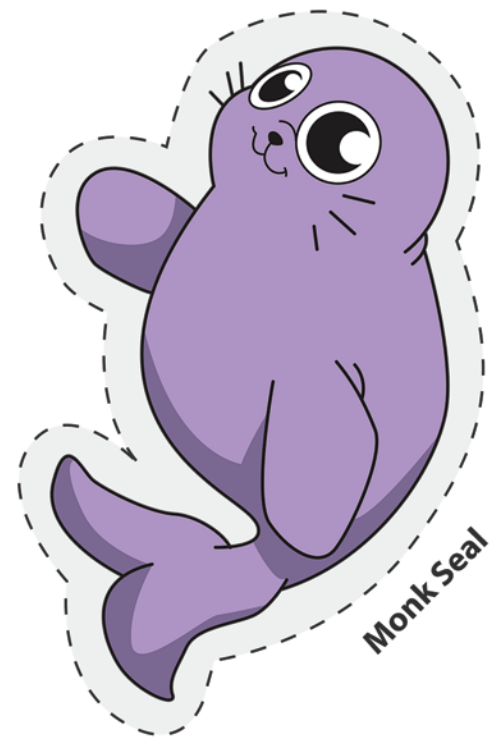
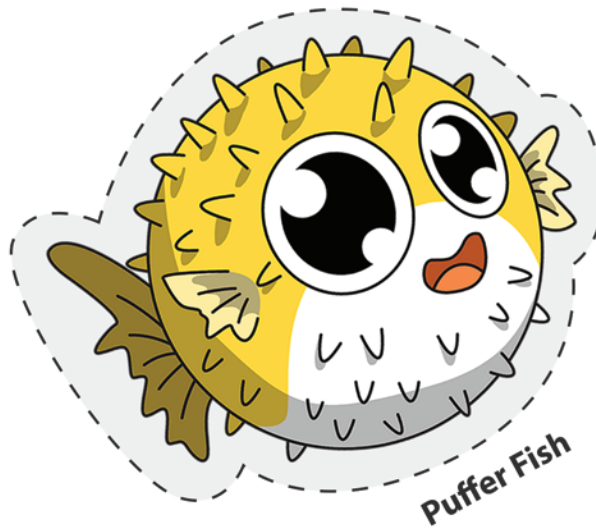
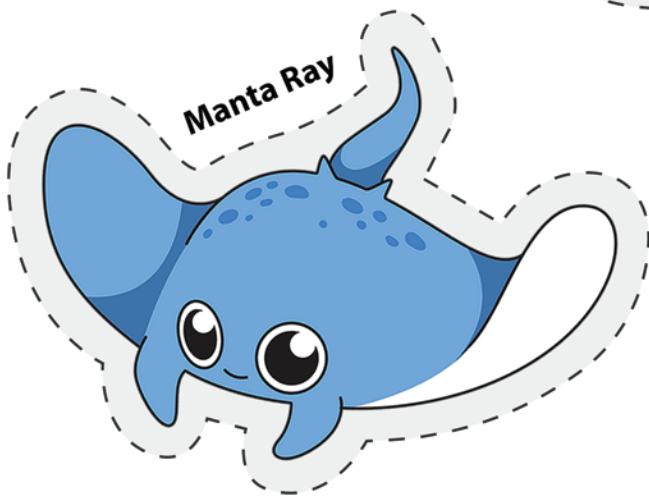
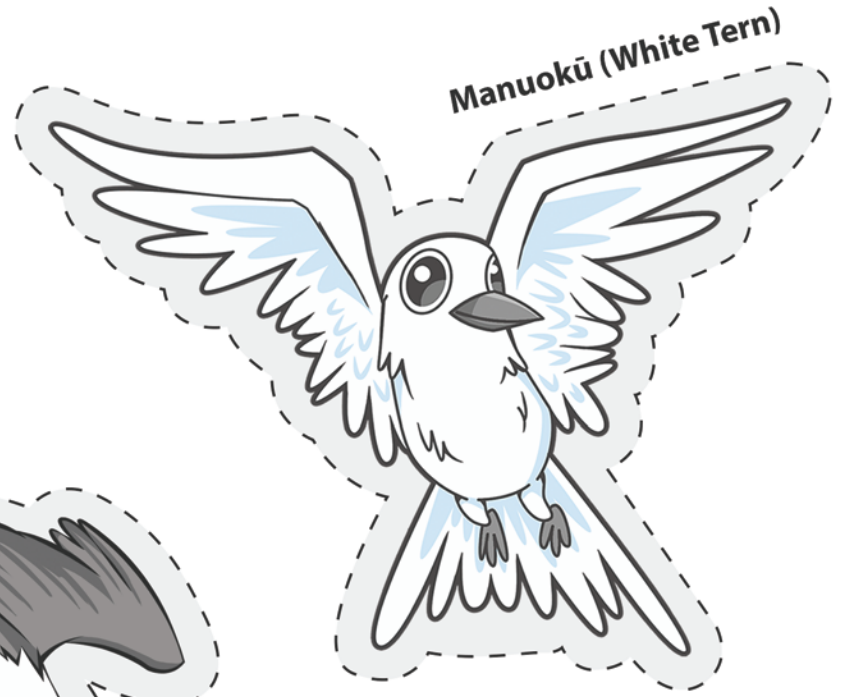
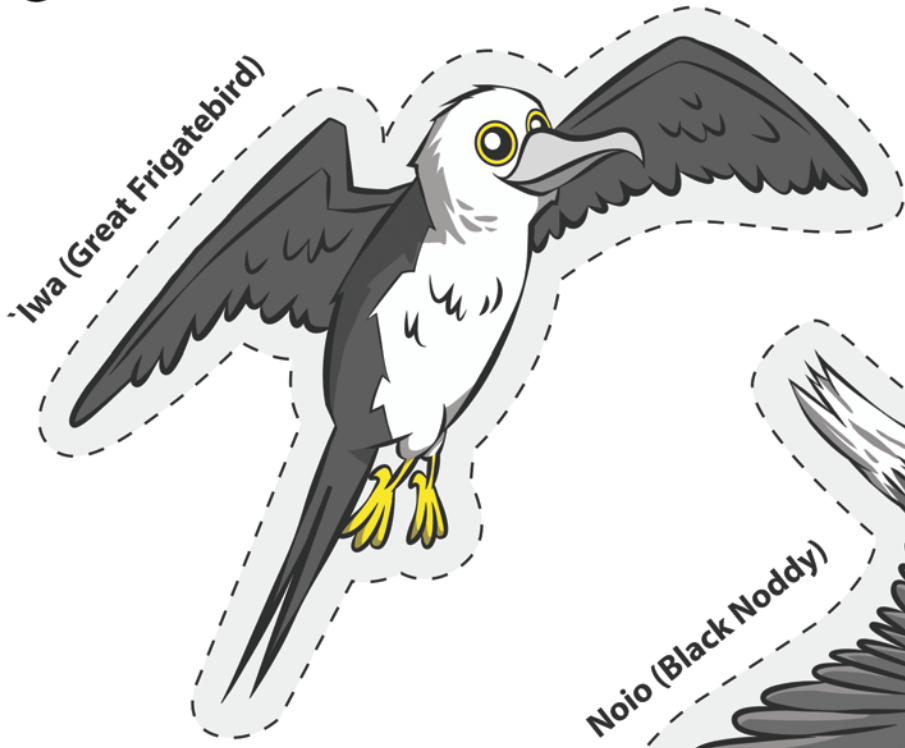
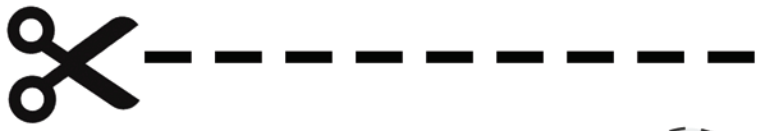
WA'A : CUT-OUTS

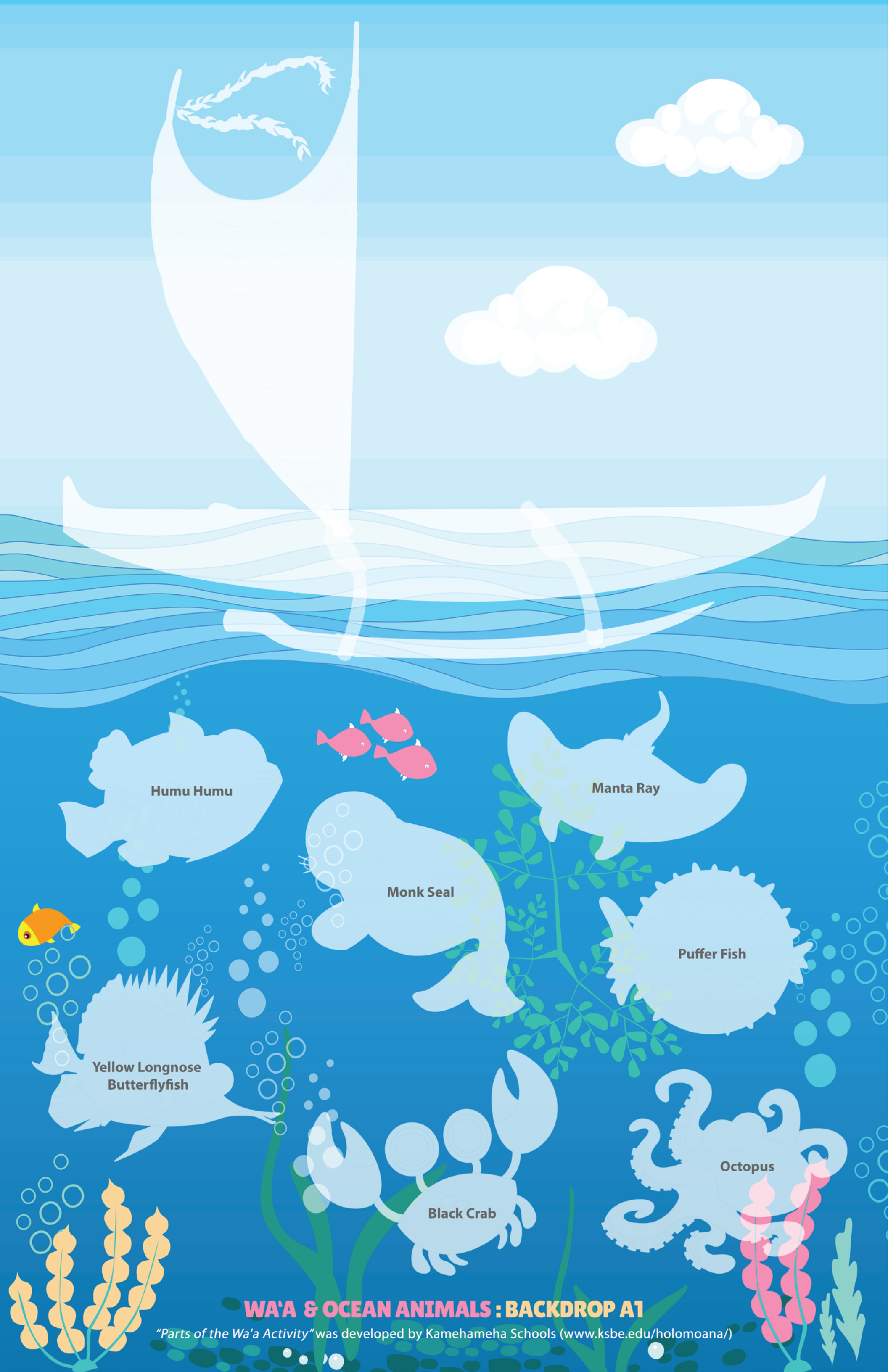
Cut and assemble the pieces onto the backdrops.



OCEAN ANIMALS: CUT-OUTS

Cut and assemble the pieces onto the backdrops.





Humu Humu

Manta Ray

Monk Seal

Puffer Fish

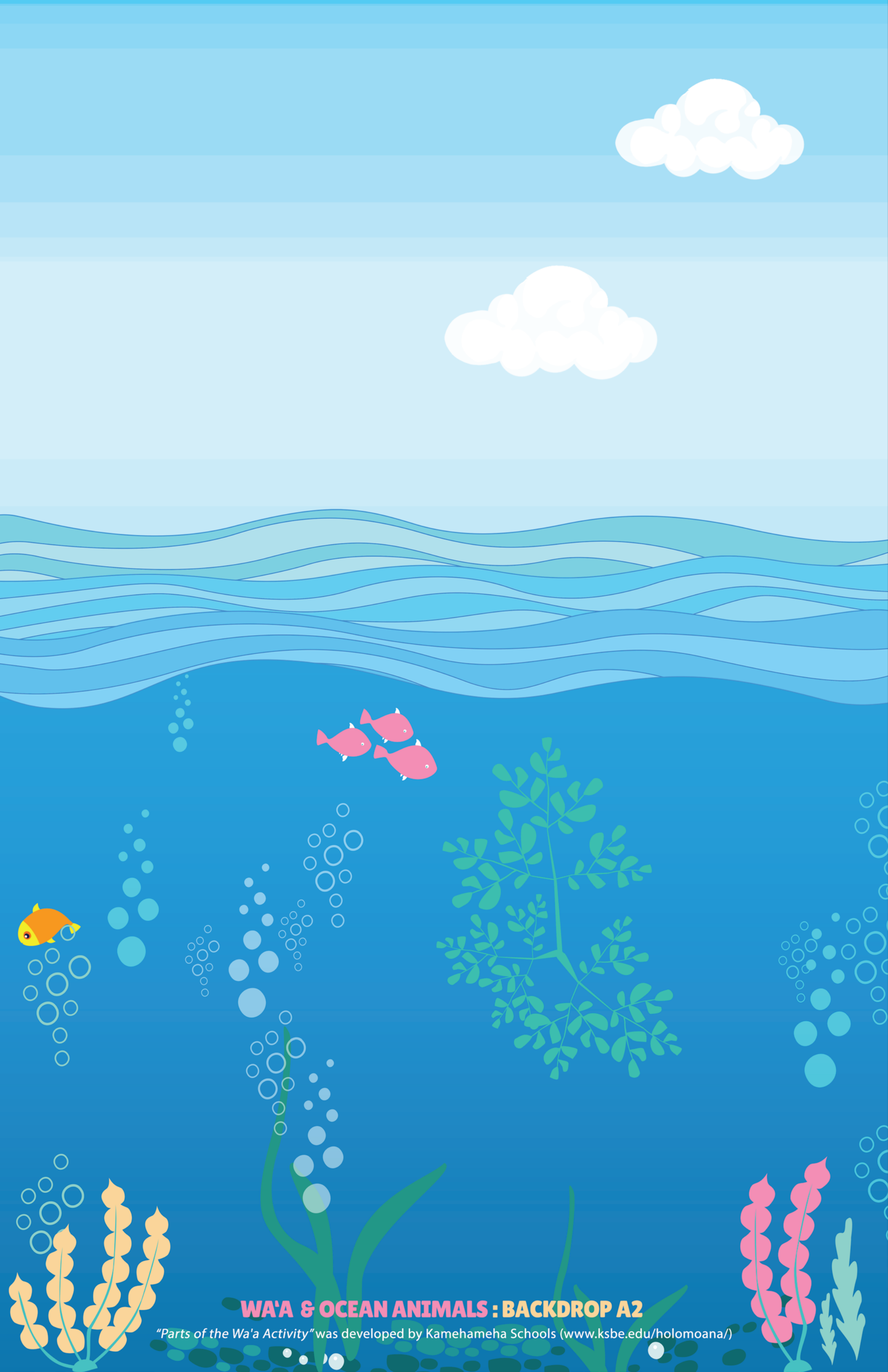
Yellow Longnose Butterflyfish

Octopus

Black Crab

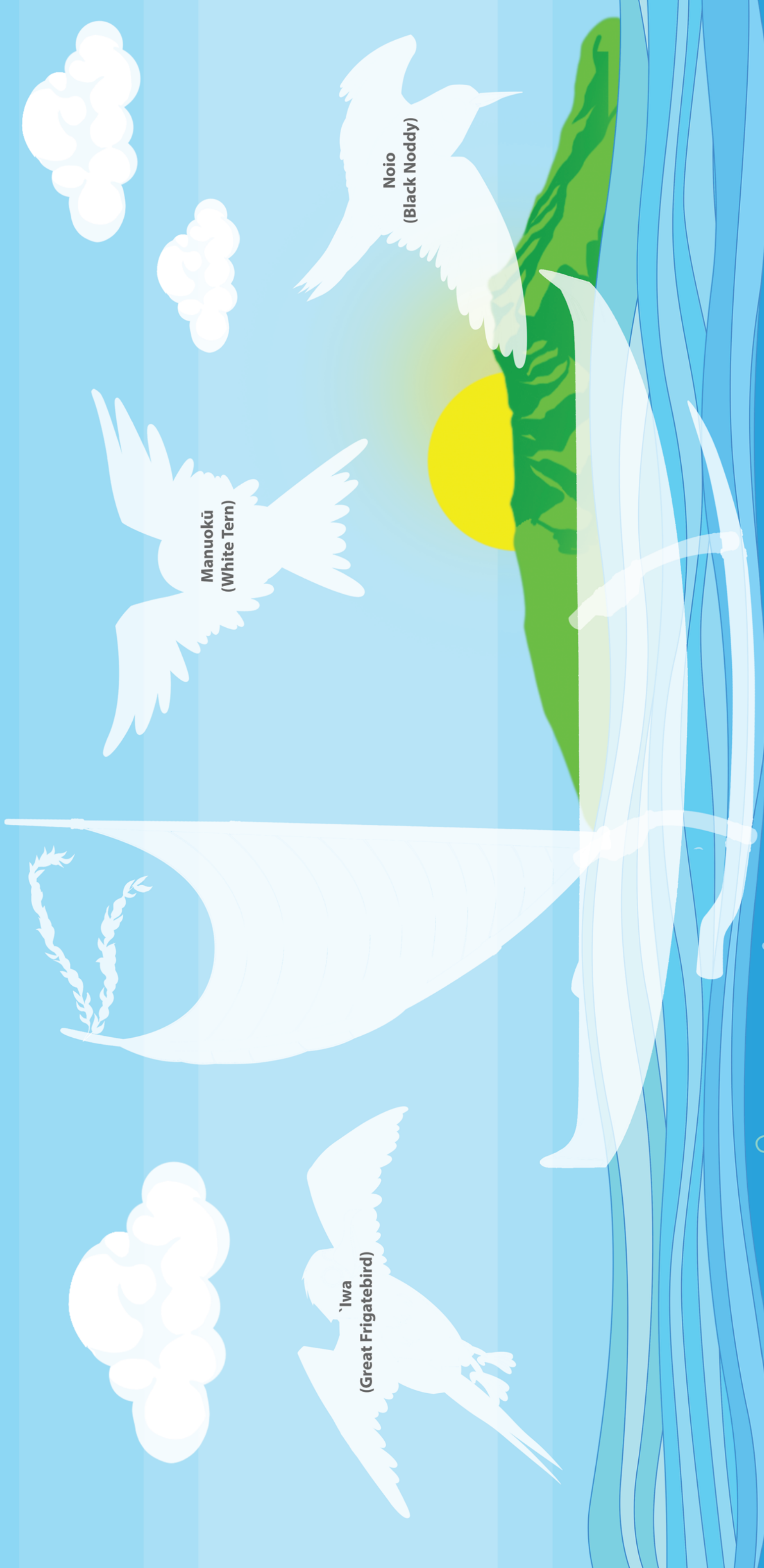
WA'A & OCEAN ANIMALS : BACKDROP A1

"Parts of the Wa'a Activity" was developed by Kamehameha Schools (www.ksbe.edu/holomoana/)



WA'A & OCEAN ANIMALS : BACKDROP A2

"Parts of the Wa'a Activity" was developed by Kamehameha Schools (www.ksbe.edu/holomoana/)



'Iwa
(Great Frigatebird)



Manukū
(White Tern)

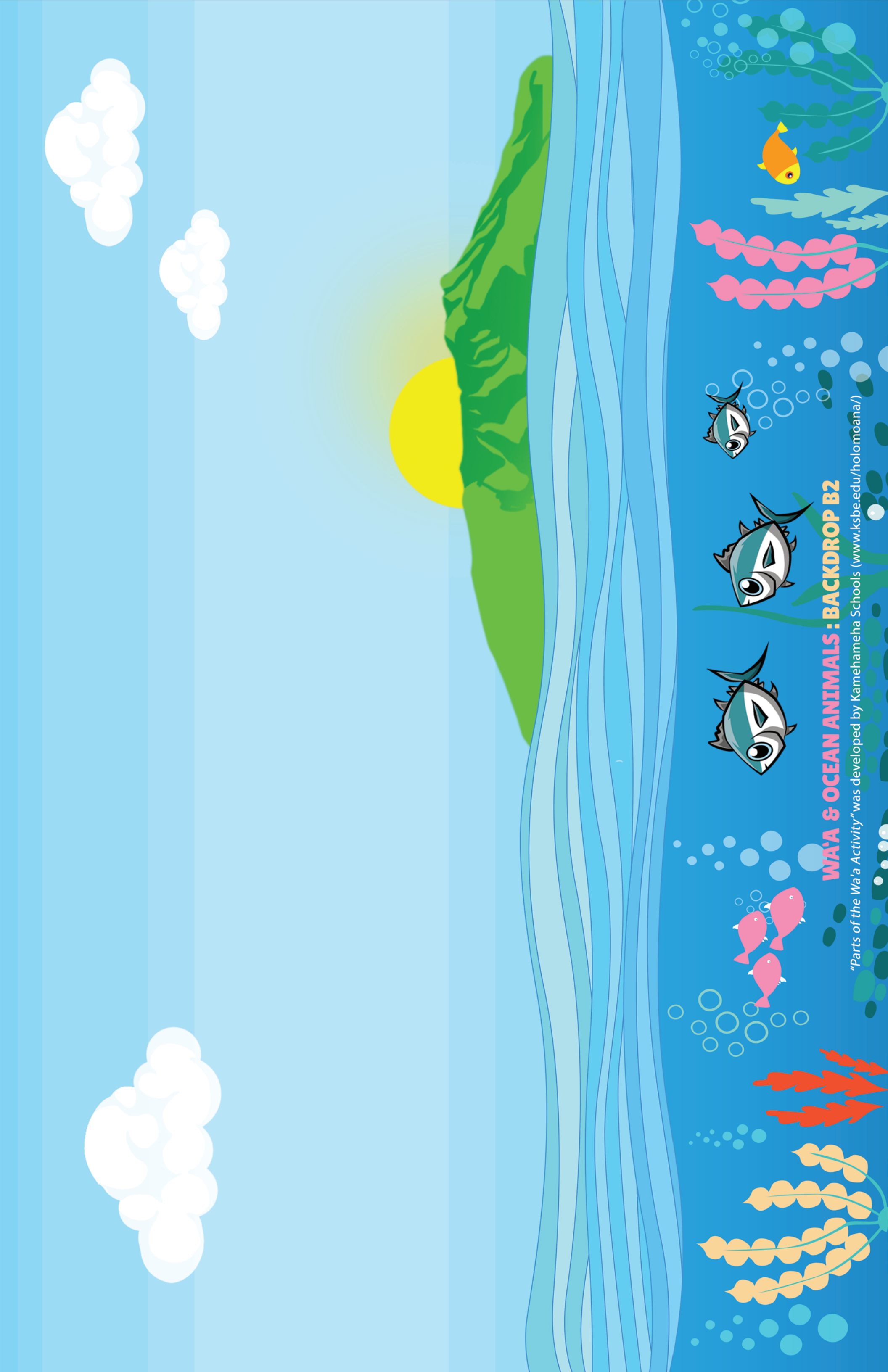


Noio
(Black Noddy)



WA'A & OCEAN ANIMALS : BACKDROP B1

"Parts of the Wa'a Activity" was developed by Kamehameha Schools (www.ksbe.edu/holomoana/)



WA'A & OCEAN ANIMALS : BACKDROP B2

"Parts of the Wa'a Activity" was developed by Kamehameha Schools (www.ksbe.edu/holomoana/)